

:-: PANAMA :-:



FUMIGATION BRIGADE



STREET PAVING



INAUGURATING WATER SYSTEM JULY 4, 1905

When sanitary measures were instituted in 1904, the campaign against mosquitoes was begun. A gang of about 900 natives was at one time engaged with ladders and paste, sealing all the crevices in the houses in Panama prior to fumigation. Streets were paved, a water system installed and a general clean-up was made.

:-: P A N A M A :-:



Thirteenth Street before and after the sanitary improvements. All the streets have been renovated in the same manner.



NORTH AVE. VIADUCT
PUBLIC MARKET ON RIGHT

CENTRAL AVE. LOOKING SOUTH

A NARROW STREET

CENTRAL AVE. SHOWING LA IMPERIAL ICE CREAM PARLOR

Visitors will be struck with the cleanliness of the streets, due not alone to the reforms instituted by the I. C. C., but to the efforts of the Panamanian Government. Many of the streets are quaint and pretty.

:-: PANAMA :-:



FROM CHIRIQUI PRISON



SEA FRONT



OLD FIRE CISTERN



CENTRY TOWER



LAS BOVEDAS



MARKET BEACH OR PLAYA



ON DUTY

Marketing on the beach is participated in by all nationalities. Boats with supplies come from miles up and down the coast. The old town was completely walled as a protection against pirates. Part of the ancient stone wall still remains. The old fortifications on the sea wall are known as Las Bovedas.

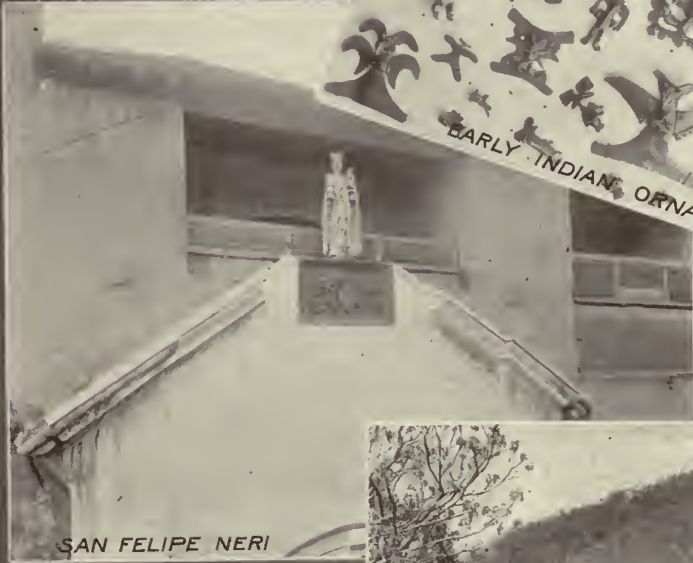
:-- PANAMA :--



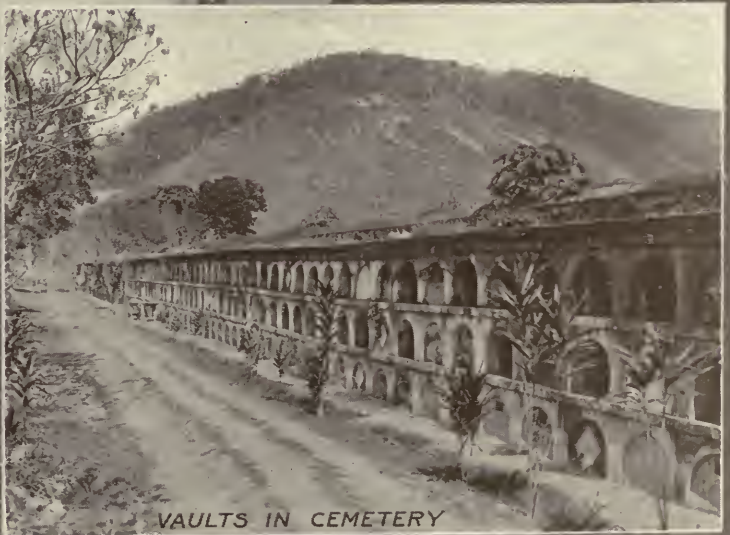
FAMOUS FLAT ARCH



EARLY INDIAN ORNAMENTS



SAN FELIPE NERI



VAULTS IN CEMETERY

The flat arch in the ruins of Santo Domingo church is one of the best examples of its kind in the world. It is 35 inches wide and 38½ feet across, unsupported by capstones, and about 250 years old. It shows the comparative freedom of the Isthmus from earthquakes. Rich in archaeological interest is Ehrman's collection of the gold Huacas (of Chiriqui). San Felipe Neri was the first parish church erected in new Panama, completed in 1688. Now used as a convent.

:-: PANAMA :-:



NATIONAL INSTITUTE



ONE OF THE HALLS, NATIONAL INSTITUTE



GOVERNMENT PALACE



NATIONAL THEATRE



CITY HALL

The splendid public buildings, worthy of any town of its size in the world, are real monuments to Panamanian progress. The National Institute has class room for 1000 boys. It cost about \$700,000. The National Theatre and Government Palace cost \$700,000. The City Hall cost \$140,000. G. N. Ruggieri was the Architect, and F. H. Arosemena, the Contractor, for these buildings.

::: PANAMA :::

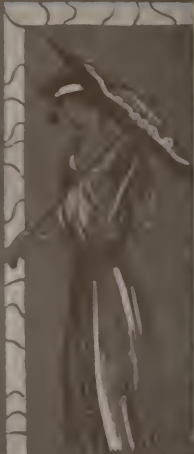


The old Canal Administration Building was built for a hotel and afterwards purchased and used as headquarters by both French Companies, also by the Americans up to 1907. The ruins of the Jesuit Mission (shown in oval) was built in 1759, and destroyed by fire April 26, 1781. On a portion of its site now stands a modern 3-story building. The American Legation was the former residence of the French Chief Engineer and directors.

:--: P A N A M A :--:



INDEPENDENCIA



PLAZA ARANGO AND POLICE STATION



ROYAL PALMS,
ST. THOMAS HOSPITAL



SANTA ANA



DE LESSEPS

Parks

The public parks are the favorite meeting places of the masses. Band concerts are held every Sunday and Thursday evening at either the Cathedral (Independencia), or Santa Ana Plazas. Assembled are natives in their gala clothes, together with a cosmopolitan mixture of races.

:-: PANAMA :-:



READING ROOM, UNIVERSITY CLUB



BALL ROOM, INTERNATIONAL CLUB



PATIO, UNION CLUB



ROOF GARDEN, UNION CLUB



BALL ROOM, UNION CLUB



Club life is well represented. Social entertainments are given very frequently. The Union Club was established in 1907 and is the outgrowth of the old Commercial Club. The International Club has been in existence 20 years. The University Club is one well patronized by the Americans. The Centro Peruano and the Spanish Club each have a large following.



This photograph was taken in the early part of the year 1900. The building shown in this photograph is the main building of the University of the Philippines. The building was designed by the architect Juan Luna and was completed in 1900. The building is now the main building of the University of the Philippines.

==: PANAMA ==:



DINING ROOM



PARLOR



PALM GARDEN



HOTEL CENTRAL



BEDROOM SUITE

Views of HOTEL CENTRAL



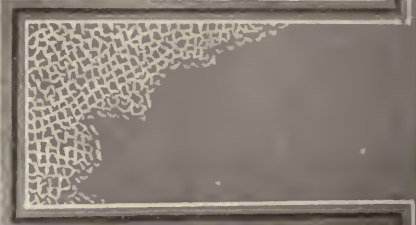
PANAMA



PANAMA



COLON



COLON

The Müller Stores

Panama and Colon

:=: PANAMA :=:



PANAMA JOURNAL



OSCAR MULLER, JEWELER, OPTICIAN AND ENGRAVER



THE BEEHIVE - CHINESE AND JAPANESE GOODS - CHONG FAT AND CO.

:-: PANAMA :-:



PANAMA BRANCH INTERNATIONAL BANKING CORPORATION



PERUVIAN STEAMSHIP CO.
P.L. FELLINGER, AGENT



INTERIOR WEST COAST TRADING CO.



WEST COAST TRADING CO. P.L. FELLINGER, PROP.



MISTRELI - THE JEWELER

:-: P A N A M A :-:

Interior & Exterior Views

CENTRAL PHARMACY

ESTABLISHED 1881



Metropole Hotel
and
Dining Room



:-: PANAMA :-:



MONOLINE ROOM



PRESS ROOM



EXTERIOR



EDITORIAL OFFICE

Star & Herald
COMPANY
ESTABLISHED 1840



MÜLLER BUILDING



OPERATING ROOM MARINE'S STUDIO